

DEXFINE  
protect

## SAFETY PEN NEEDLES Instructions for use

### Compatible Pens

If your insulin pen is not listed, please contact us to check compatibility.

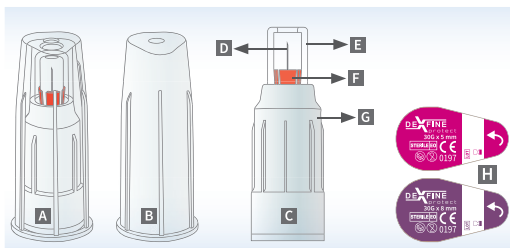
The insulin pens listed in the IFU may have different external features but they have the same joints as the pens that are tested in the compatibility test. Therefore the results of the test cover the entire pen described in the IFU.

- HumaPen Savvio ■ Humatropen ■ HumaPen Luxura
- Humalog Mix25tm ■ Humulin Pen ■ NovoPen 3
- NovoPen 4 ■ NovoPen 5 ■ Novo Echo ■ NovoPen Junior
- NovoLet N ■ NovoMix 30 FlexPen ■ Induo
- JuniorStar ■ BD Pen ■ Wangbang ■ Delfu

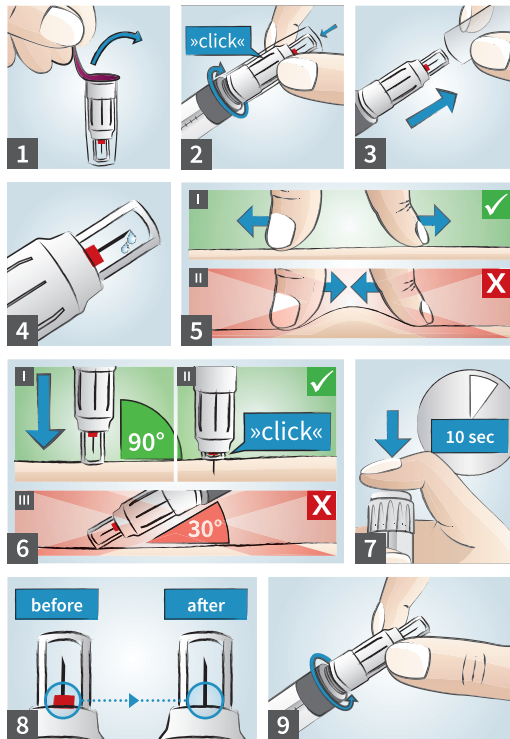
### Available sizes (100 pcs./pu)

	■ 30G x 5 mm	■ 30G x 8 mm
REF	A066050DEEN-XX00X	A066080DEEN-XX00X
EAN	8809445832106	8809445832113
PZN	16666037	16666043

### Components



- A DEXFINE protect
- B Sterile cap
- C Safety pen needle
- D Cannula
- E Needle cap
- F Safety shield
- G Middle cap
- H Sterile paper



### Introduction

- Before using DEXFINE protect Safety Pen Needle please read these instructions carefully.
- DEXFINE protect Safety Pen Needle is a sterile single-use pen needle with a safety mechanism that automatically activates after injection process.
- If the safety shield is visible, the safety pen needle can be used.
- If the safety shield is not visible, the safety shield was activated and the safety pen needle cannot be used anymore.
- It shall be used by healthcare professionals, caretaker and patients

### Intended use

DEXFINE protect Safety Pen Needle is intended for use with insulin pens for subcutaneous injection of insulin. The attached safety shield automatically locks in place and avoids cross infection caused by accidental puncture injuries from the patient's end of the cannula.

### Warning:

- Do not use the safety pen needle if:
  - the sterile cap or sterile paper is damaged,
  - the sterile paper is detached,
  - the cannula is bent or damaged.
- Do not use the safety pen needle if the shelf life is exceeded.

### Caution:

- Before using the insulin pen, consult its instructions for use.
- Always perform the injection at a 90° angle to the skin. Do not change the angle in order to prevent bending or breaking of the cannula (6-III).
- Only use compatible insulin pens with DEXFINE protect Safety Pen Needle.
- Before use, take care not to activate the safety mechanism accidentally, as the safety pen needle cannot be used anymore.
- Store the safety pen needles in a dry place between 1°C up to 30°C

### General preparation

1. Prepare injection according to your care facility regulations.

### Screwing the safety pen needle onto the insulin pen

2. Remove sterile paper from DEXFINE protect (1).
3. Hold the sterile cap, lightly press while turning safety pen needle clockwise onto the insulin pen until there is a clicking sound audible (2).
4. Remove the sterile cap from safety pen needle (3).

### Preparation of the safety pen needle and the insulin pen

5. Check cannula to see if it's damaged (bent, broken, etc.).
6. Set 1 – 2 insulin units and allow 1 – 2 drops to flow out of the cannula (4). If no drops become visible, use a new safety pen needle.
7. Set correct insulin dosage amount.

### Carrying out an insulin injection (injection example)

8. Pull the skin taut (5-I). Do not form skin fold. (5-III).
9. Insert safety pen needle straight into the skin at a 90° angle (6-I) until the red safety shield is not longer visible and the "click" sound is heard. (6-III).
10. Inject insulin according to instructions for use of the insulin pen. Leave safety pen needle in the skin for 10 seconds after injection (7).
11. Remove safety pen needle from skin. The safety mechanism is released automatically (8).

### After injection

12. Remove safety pen needle from insulin pen by turning counter-clockwise (9).
13. Promptly dispose the safety pen needle and it's sterile cap separately according to your care facility regulations.

### EXPLANATION OF SYMBOLS

REF	Catalogue number
Manufacturer	Manufacturer
Date of manufacture	Date of manufacture
EC REP	Authorized representative in the European Community
Consult instructions for use	Consult instructions for use
Use-by date	Use-by date
LOT	Lot number
Caution	Caution
Keep dry	Keep dry
Do not reuse	Do not reuse
Do not use if the product sterile barrier system or its packaging is compromised.	Do not use if the product sterile barrier system or its packaging is compromised.
Do not resterilize	Do not resterilize
Temperature limit	Temperature limit
STERILE EO	Sterilized using ethylene oxide
CE	CE Mark of Conformity with NB identification Number (NB 0197)
MD	Medical Device
UDI	Unique Device Identifier

Medexel Co., Ltd.  
252, Geumgwangosan-ro,  
Geumgwang-myeon,  
Anseong-si, Gyeonggi-do,  
KOREA  
Tel: +82-31-299-1077  
Fax: +82-31-677-8087  
www.medexel.co.kr

EC REP Medical Technology  
Promedt Consulting GmbH  
Ernst-Heckel-Straße 7, 66386  
St. Ingbert, Germany

Trademark Owner, Distribution and Importer



IME-DC GmbH  
Fuhrmannstraße 11  
95030 Hof | Germany  
Tel: +49 9281 | 85 01 6-0  
Fax: +49 9281 | 85 01 6-100

E-Mail: info@imedc.de  
Web: www.imedc.de

IFU-SPN-04(Rev.2/2025.04)

PO66001DEEN0201XX00X  
Status: 2024-01